

The PAS project

Ministry of Education, Children and Youth
Luxembourg



LE GOUVERNEMENT
DU GRAND-DUCHÉ DE LUXEMBOURG
Ministère de l'Éducation nationale,
de l'Enfance et de la Jeunesse



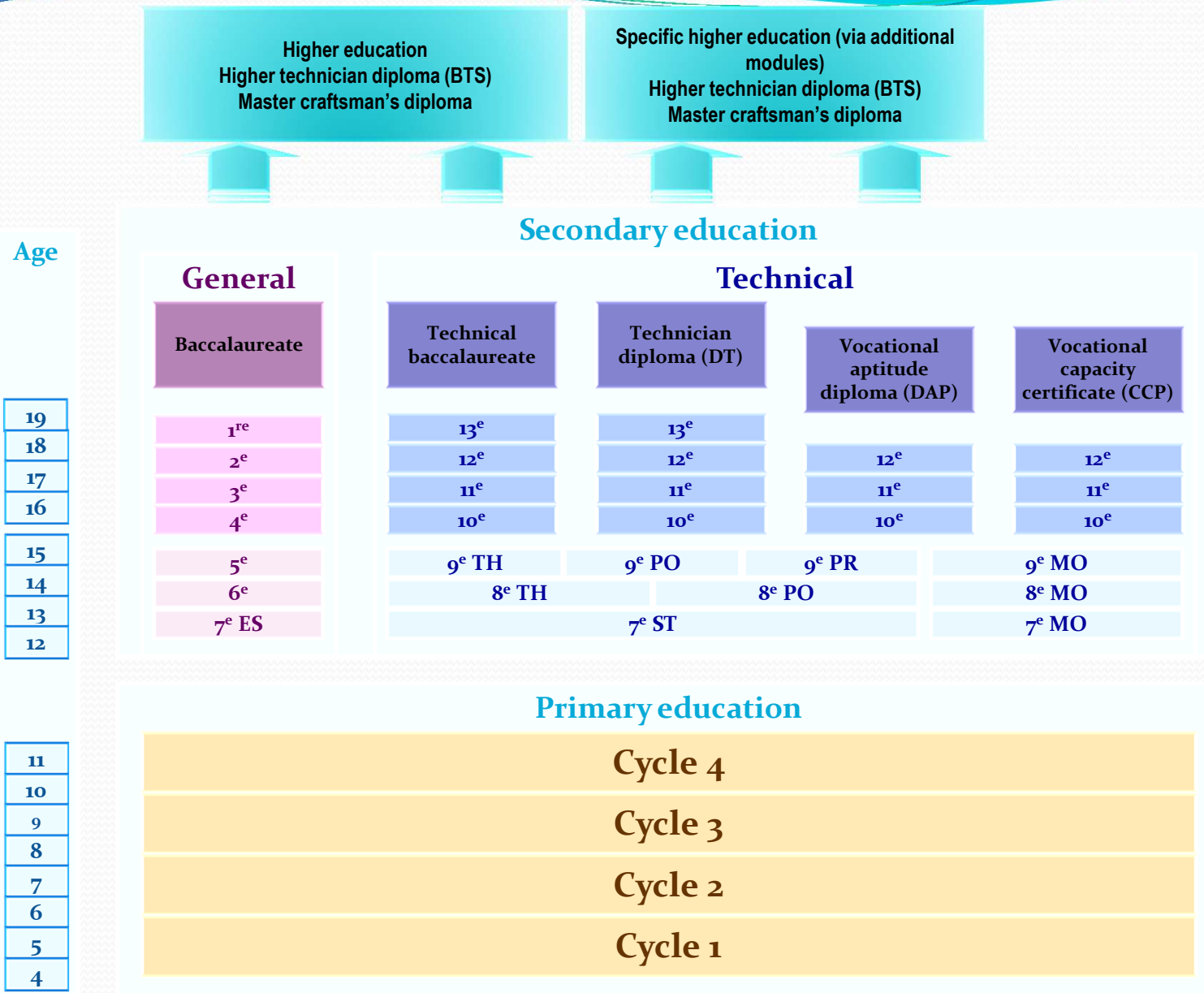
CPOS
Centre de psychologie
et d'orientation scolaires



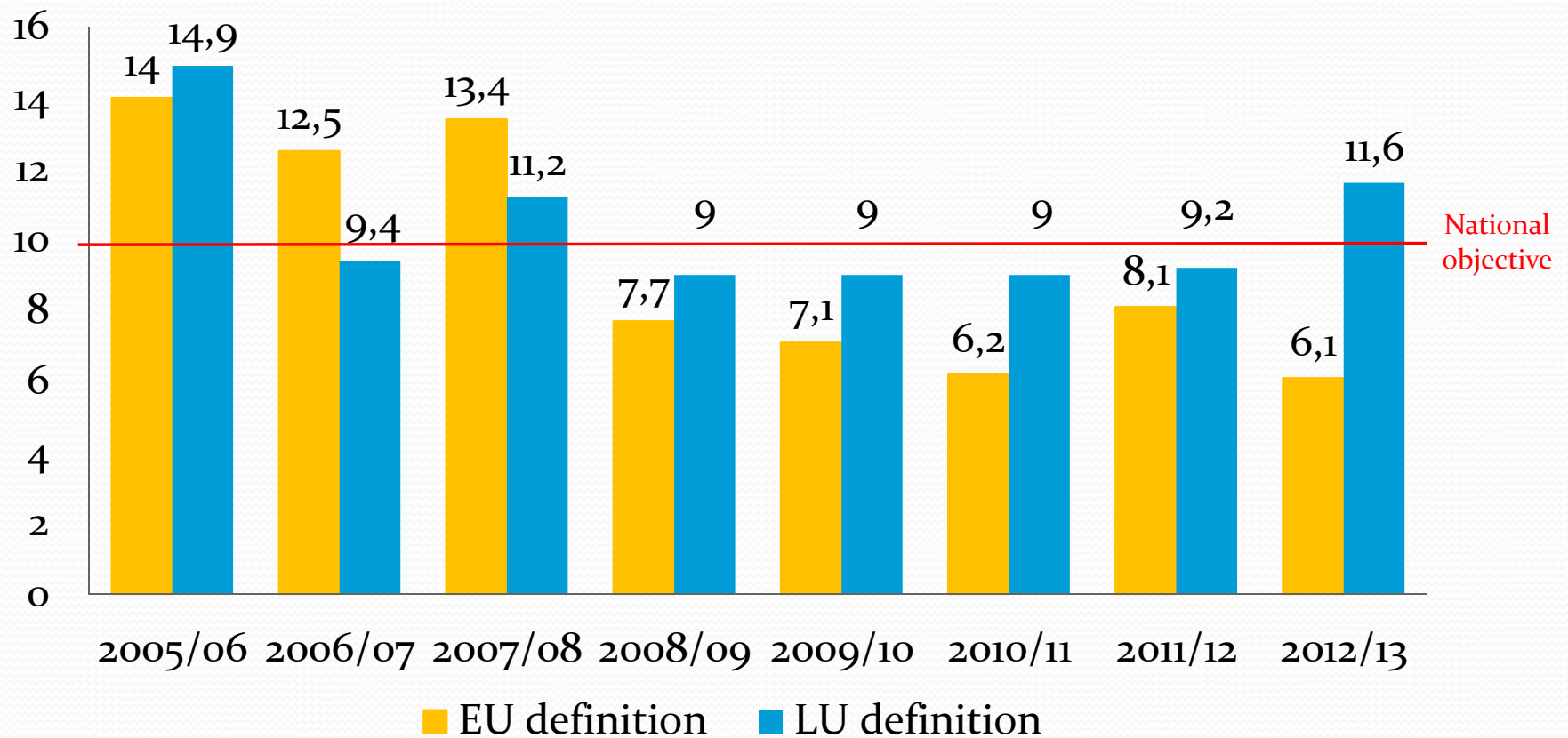
Context of the project

- A legal regulation enables secondary schools (*lycées*) to organize actions to reduce early school leaving
- However, few of the existing projects focus on learners in VET
- The aim of the PAS project was to create actions focusing specifically on learners in middle secondary education including VET

Luxembourgish school system



ESL rate in Luxembourg

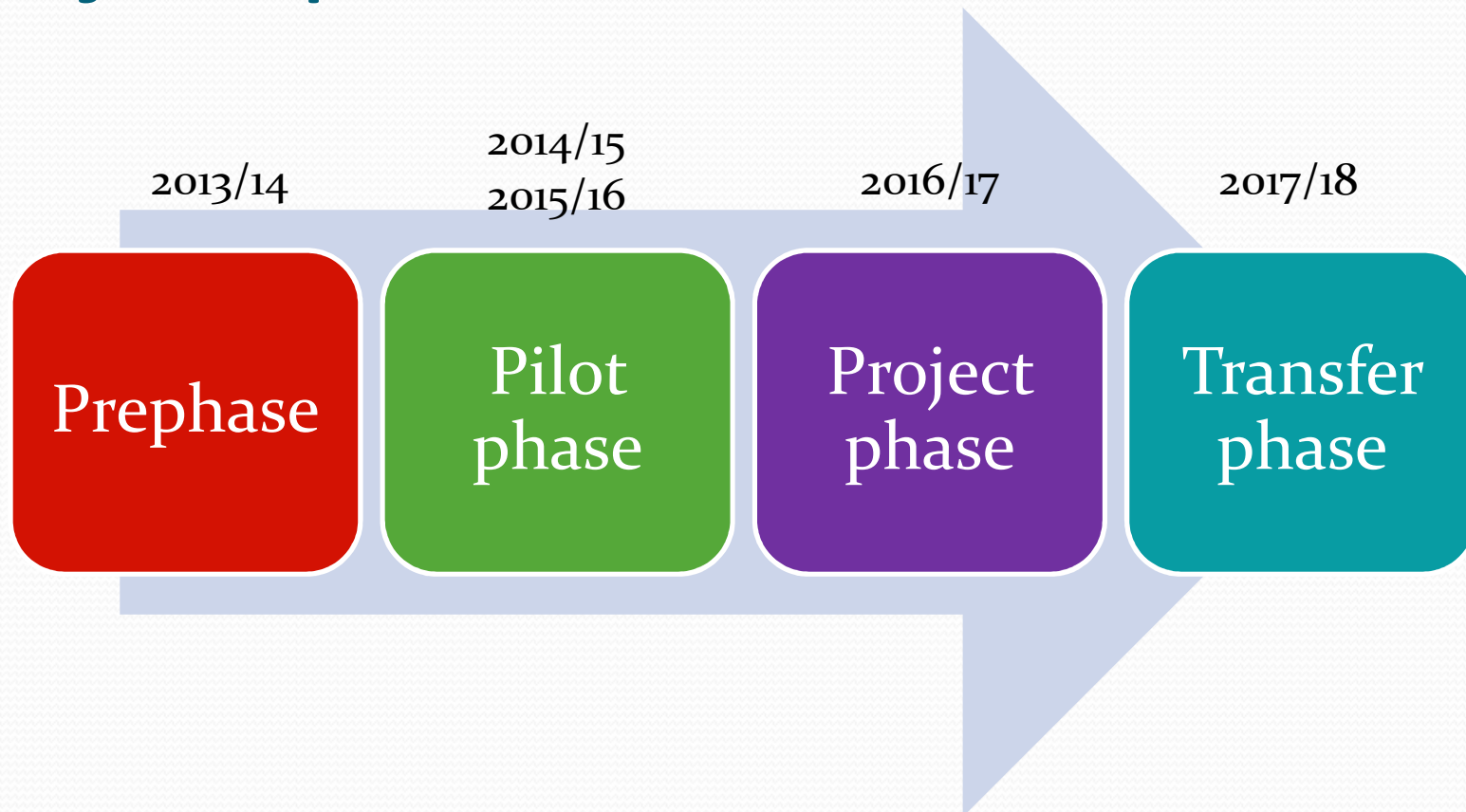




Project title and objectives

- PAS stands for “*plateforme accrochage scolaire*”
- The project objectives are:
 - To re-mobilize young learners in their first year of VET in order to increase their chances of success at personnel and educational level
 - To implement a system to prevent early school leaving in the long term at institutional level

Project phases



Prephase – 2013/14

Prephase

- Elaboration of a questionnaire to evaluate personal and school related situation of learners
- Testing of questionnaire (in 3 schools, 10th and 4th classes, n~300)
- Evaluation of results
- Creation of a tool box
- Revision of questionnaire

Pilot phase – 2014/15

Pilot
phase

- Communication of project to schools
- Screening of 10th/4th classes
- Selection of candidates - contract (family-school-PAS)
- Evaluation of individual situation and needs of the learner
 - Individual coaching and thematic activities
 - Development of prevention measures at school level
 - Development of a tool box
 - Identification of continuous training needs of staff
- Evaluation of project



Actions in schools (list)

- Brainstorming sessions about well-being in school with pupils, parents, school leaders and teachers
- Workshops on social and emotional competencies and guidance activities in class
- Development of new intra-curricular guidance-activities
- Fostering educational partnerships between school based and external support services



Results of the Pre-phase

- Sample: 288 learners, 18 classes, 3 secondary schools
- Risk of drop-out:
 - Severe risk: none
 - Moderate risk: 6 (probability of 59-69 % of early school leaving)
 - Low risk: 19 (probability of 30-49 % of early school leaving)
 - Total of learners at risk: ~9,3 %

Project perspectives (next steps)



Project phase

Transfer phase

- 2015/2016
 - Extension to other secondary schools
 - Implementation of recommendations concerning evaluation of project (with TITA partners)



**Thank you
for
your attention!**

christophe.struck@men.lu

claire.russon@cpos.lu